

BIZ

LL

LL

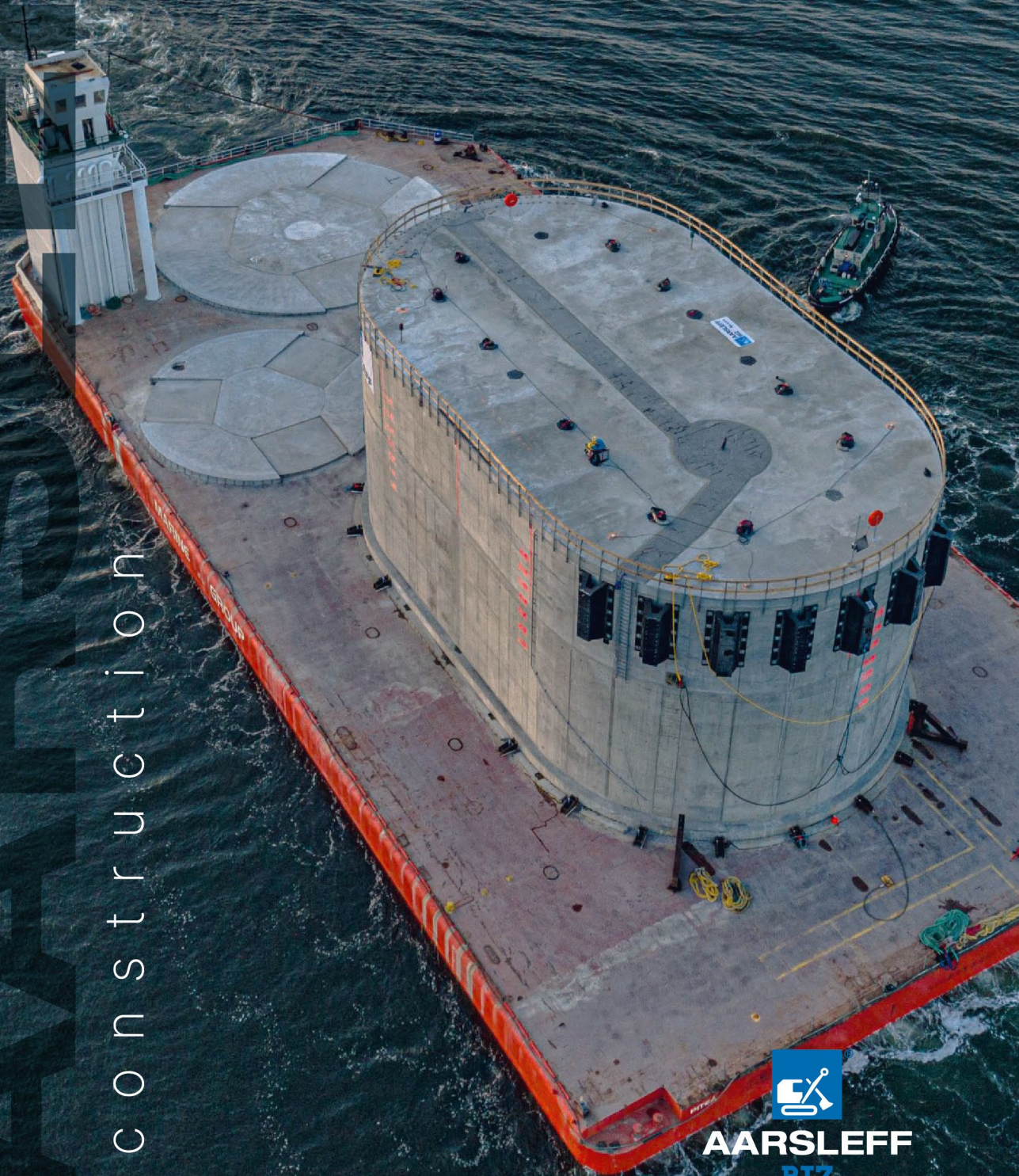
S

R

A

A

construction



AARSLEFF
BIZ



Aarsleff BIZ Sp. z o.o.

Innovative
Prefabrication
for Modern
Infrastructure



Aarsleff BIZ Sp. z o.o. is a production company operating under Per Aarsleff Holding A/S, Denmark's leading contracting group. We specialize in the manufacture of large-scale prefabricated concrete elements for the construction industry. Our products provide efficient, high-performance solutions for a wide range of infrastructure projects, including:

- Offshore wind farms
- Harbours
- Bridges
- Breakwaters and jetties
- and various other structural applications.
- Foundations
- Buildings
- Roads and railways
- Tunnels

Our production facility is located in Świnoujście, Poland, offering excellent access to road, rail, and maritime transport. Designed for versatility, our factory is capable of producing small to extremely large components—some weighing several thousand tons. With decades of engineering and project expertise backed by the Per Aarsleff Group, we bring innovation, precision, and value to every project we undertake.

Our prefabricated concrete elements meet the highest technical, environmental and economic standards. In today's construction landscape — where time, quality, and cost efficiency are crucial — our solutions help clients deliver better results, faster.

Let Aarsleff BIZ be your trusted partner in building the infrastructure of tomorrow.



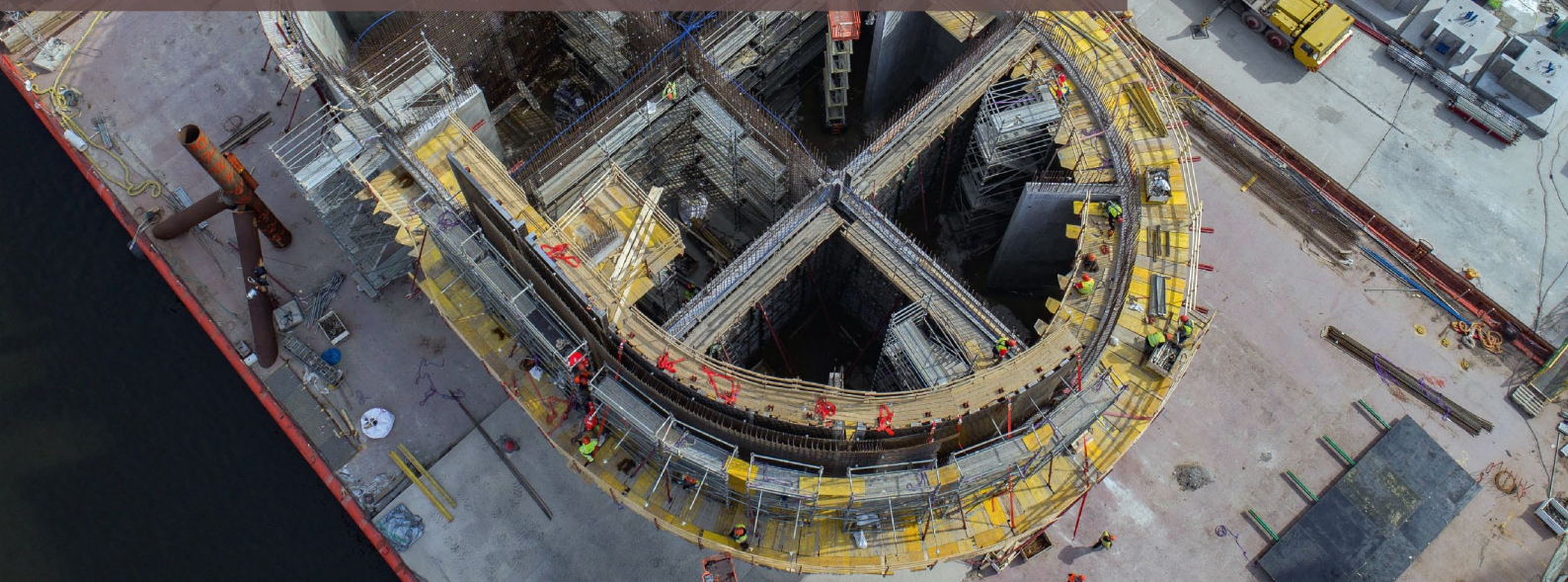
Caissons

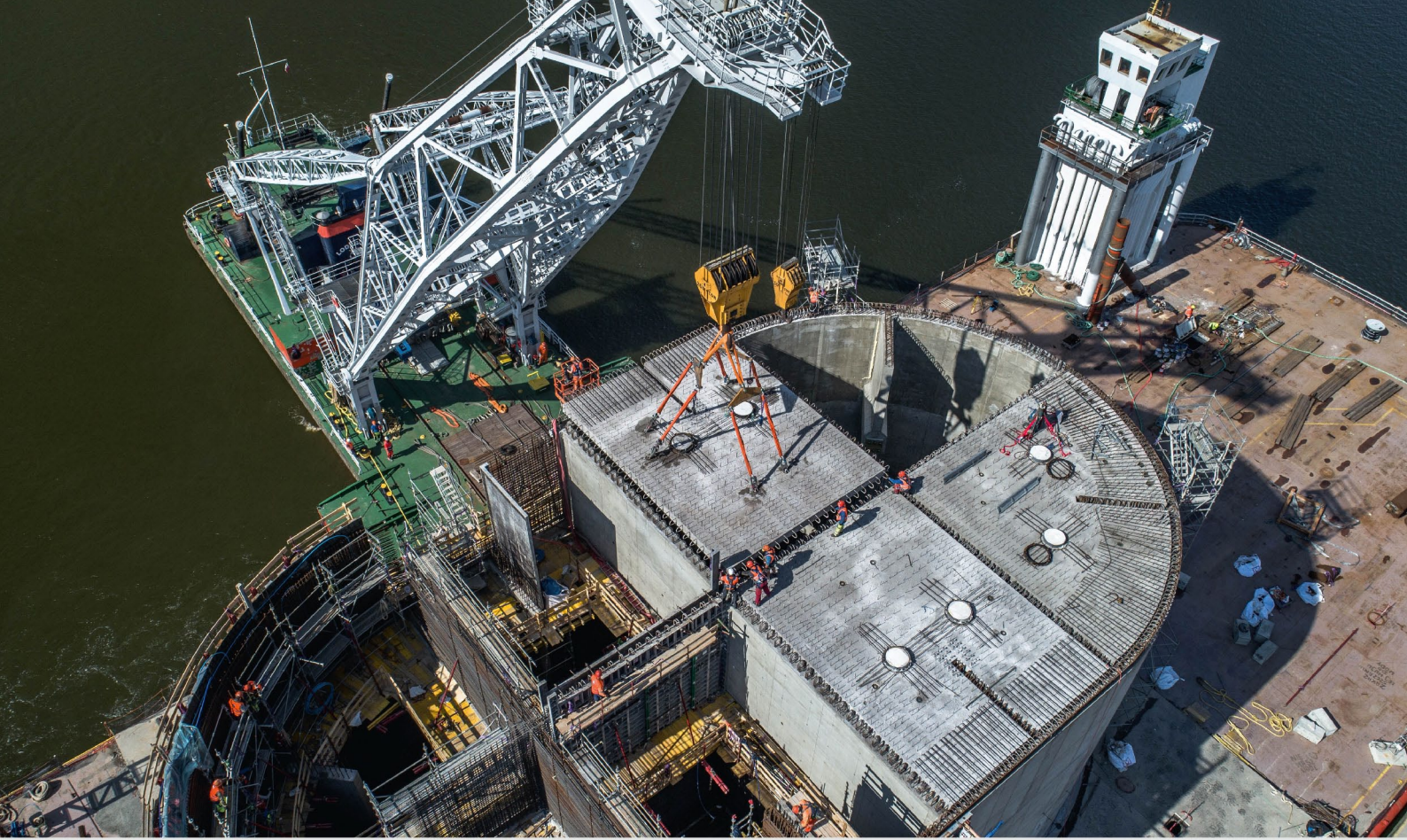
Hanstholm Harbour Pier Head Caisson

The Hanstholm pier head, delivered in 2019, represents Denmark's largest pier head ever fabricated by Aarsleff BIZ, showcasing their advanced engineering and heavy-lift capabilities. The caisson weighed approximately 6,900 tons and featured:

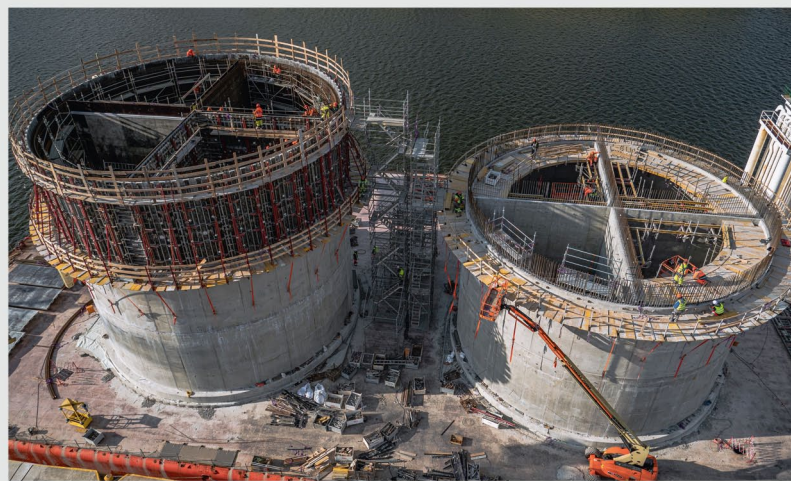
- Bottom plate: 40 m × 23 m × 0.7 m
- Overall structure: 39 m long, 22 m wide, height 19.2 m
- The total concrete volume was about 2,704 m³ and was poured in 16 separate casting phases

Aarsleff BIZ handled both fabrication and transport - towing the caisson from Świnoujście, past Kronborg Castle, to Frederikshavn, and then to its final installation in Hanstholm where it was positioned very precisely.





The Ystad Harbour Pier Head Caissons.
Delivered in 2020, weigh 2,500 tons each.

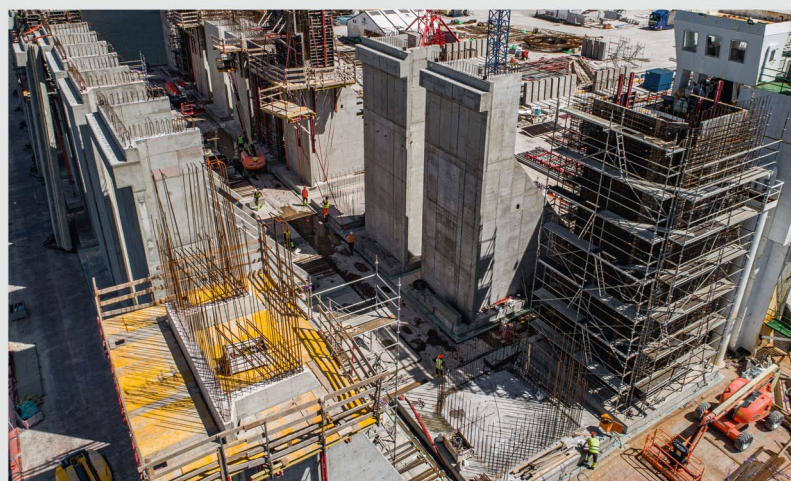


L-walls



Hargs Hamn

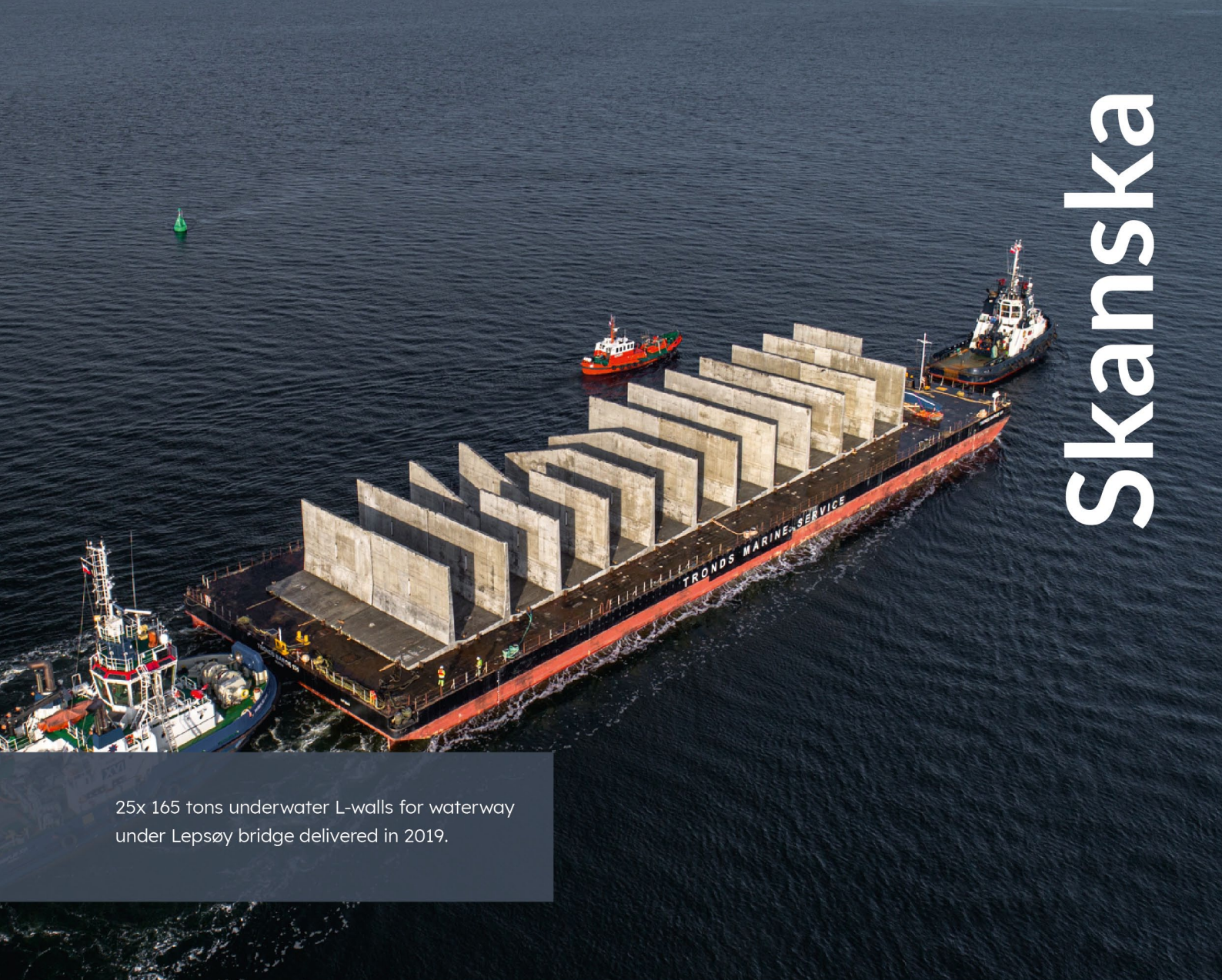
23x L-walls (weighing 270-320 tons per piece) and
22x middle filling walls weighing 45 tons each.
Delivered to Hargs Hamn in 2022.



Masthuggskajen

35x L-walls (weighing 200-300 tons per piece).
Delivered to Masthuggskajen in 2023.





25x 165 tons underwater L-walls for waterway under Lepsøy bridge delivered in 2019.



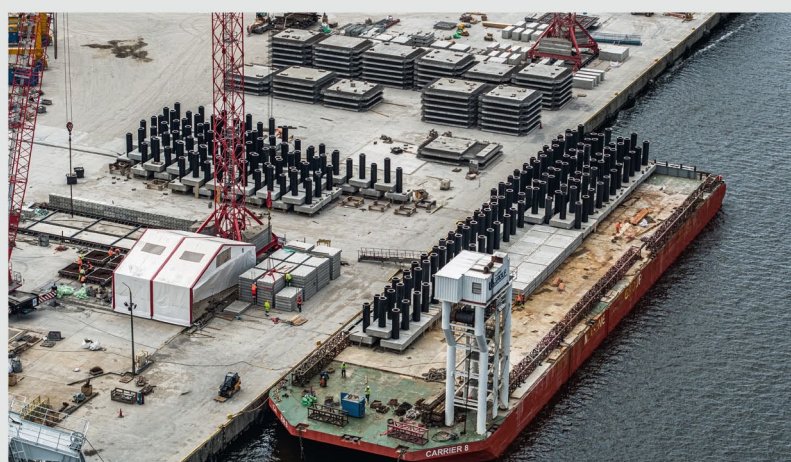
Pile deck solution



Varberg

The project includes the establishment of a 324-meter-long quay and a 140-meter-long pier, both constructed as bridge quays with pile-supported concrete decks underneath.

Aarsleff BIZ in 2023 has delivered a total of 648 elements like pile caps, slabs and heavy deck elements with a heaviest one weighing 165 tons.



Värtahamnen

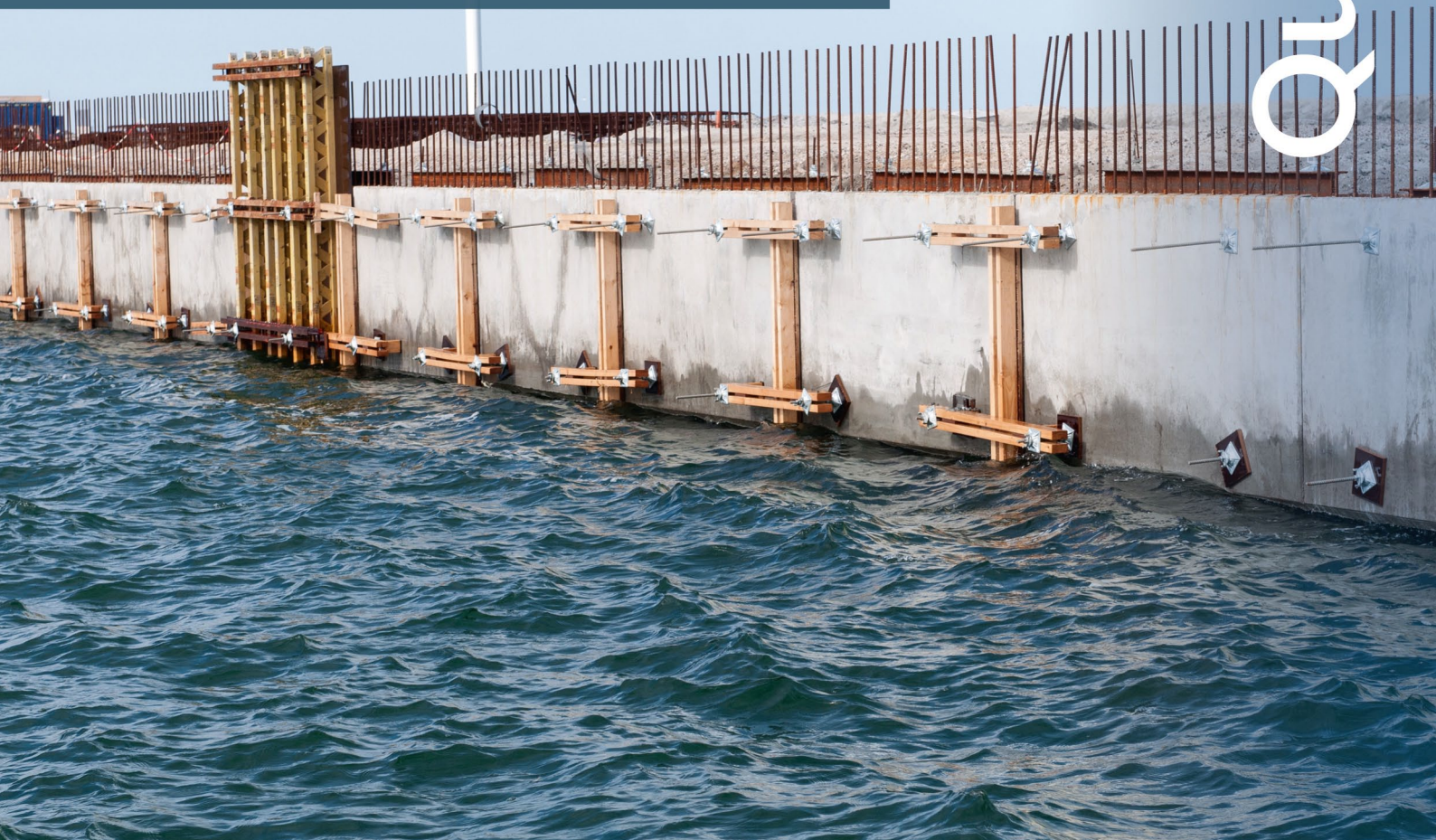
In a design and build contract, Per Aarsleff A/S has extended the largest of Stockholm's harbours, Värtahamnen by 85,000 square metres. The work was carried out from 2013 to 2016.

The new bridge deck consists of precast concrete elements installed on 1,000 steel piles. Pile caps were installed on each steel pile to protect the piles against ice in the winter and to support the concrete elements, measuring 8 x 8 metres and weighing up to 146 tons, all produced and delivered by Aarsleff BIZ.



Quay wall elements

Aarsleff BIZ has delivered hundreds of precast front L-wall elements to the various ports in Denmark and Sweden such as: Frederikshavn, Esbjerg, Ronne, Hanstholm, Ystad, Skagen and others constructed by Per Aarsleff A/S.





Ro-Ro ramps



X-blocs, tetrapods and cubipods

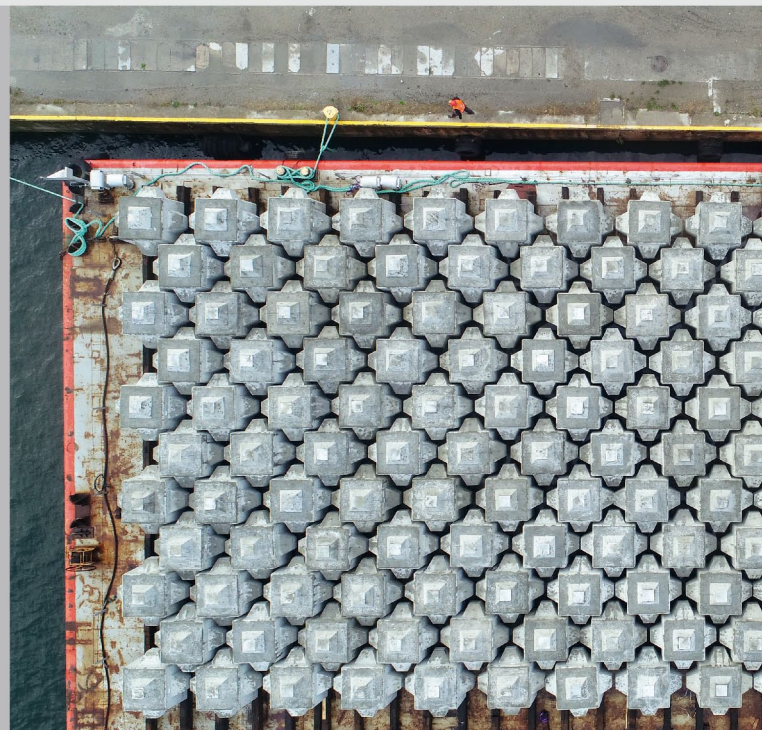




X-blocs



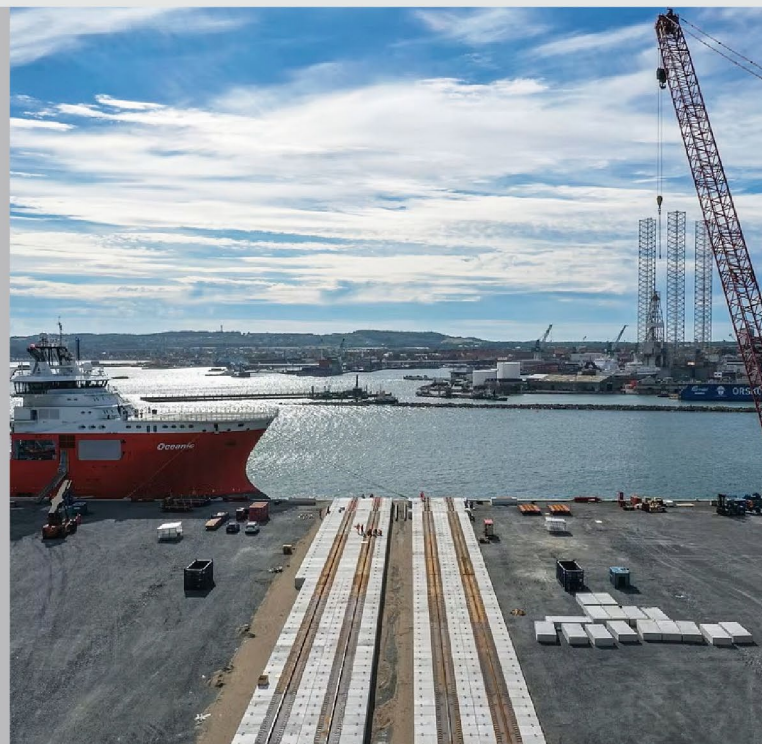
Cubipods



We have designed the heavy concrete recipes with density in a range between 2700 to 3000 kg/m³ based on natural iron oxide Magnetite.



Heavy blocs



Bridge elements



6x deck elements and 5x pier foundations for Manedsund bridge (Denmark) delivered in 2017.



Deck casting for the Nuuk bridge delivered in 2019 to Greenland.



Production of 6x of bottom plates for Lepsoy bridge caissons (Norway) delivered in 2019.



Production of 5 pcs of heavy pile cap concrete shells for Ramfjord bridge (Norway) delivered in 2025.

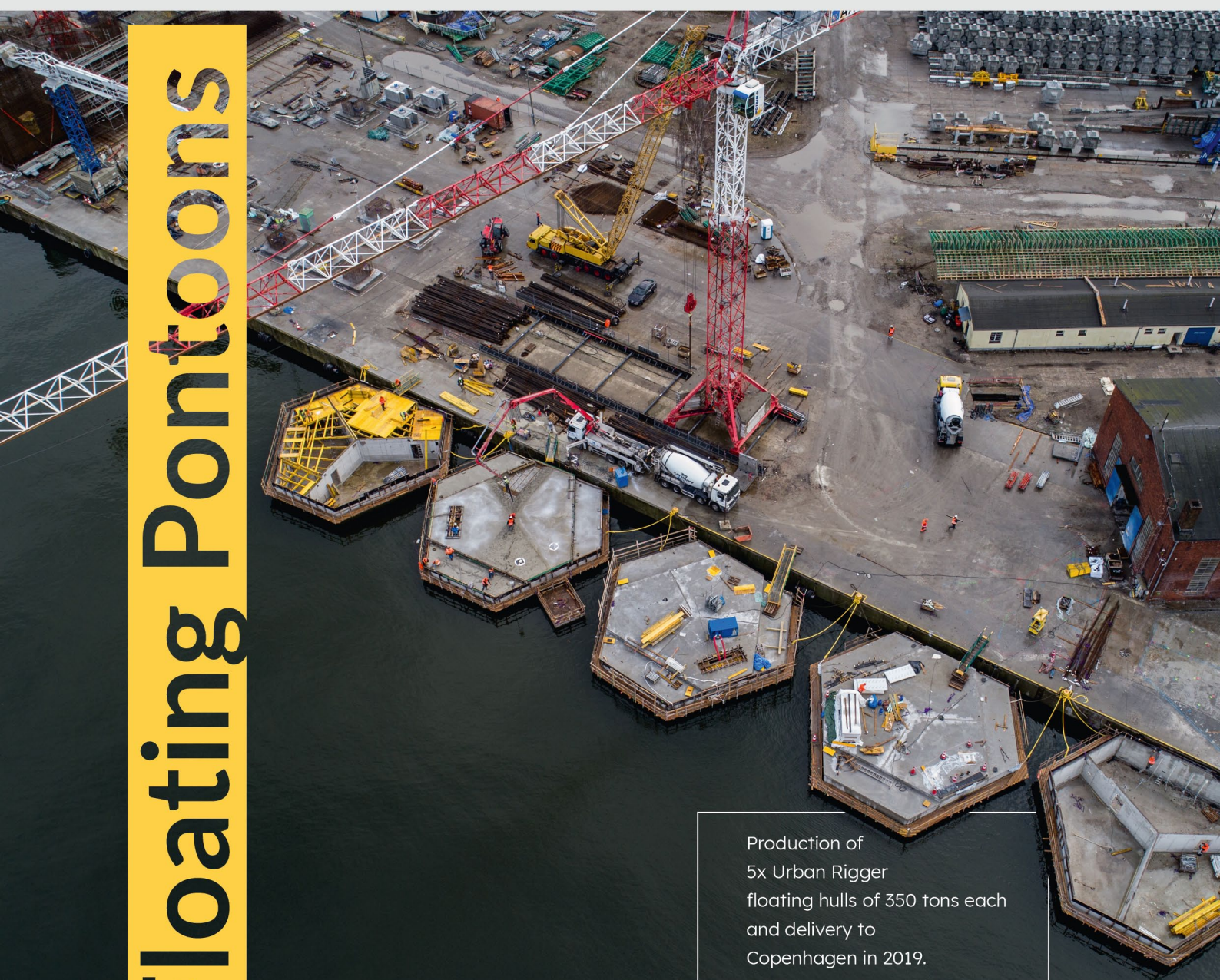


Production of 8 pcs of concrete pile caps for Hamna and Lauka bridge piers (Norway) delivered in 2019.



First of two shipments for Masnedsund (Denmark) bridge departing Świnoujście in 2017.





Floating Pontoons

Production of
5x Urban Rigger
floating hulls of 350 tons each
and delivery to
Copenhagen in 2019.

Navigation Beacons

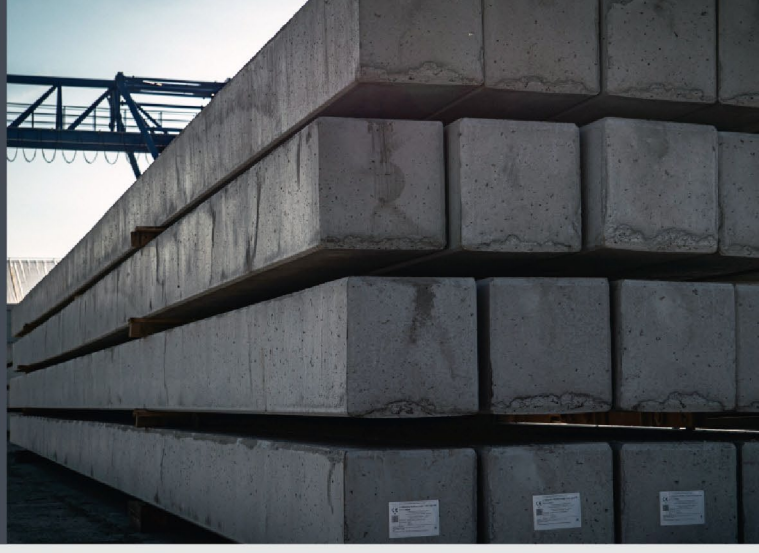


Production of 4x concrete precast element for navigational beacons located 10 km offshore Świnoujście harbour (bottom parts weighing 540 tons and top 380 tons). Elements delivered in 2014.





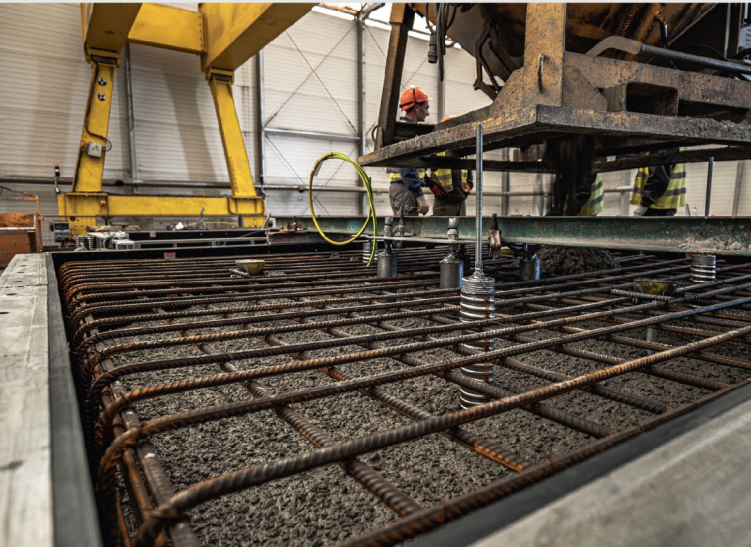
Piles



Pile Caps



Anchor plates



Foundation pads

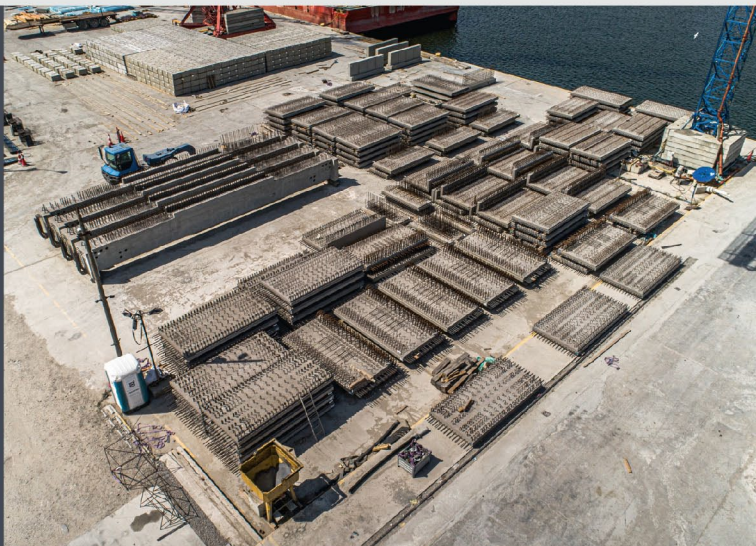




Beams



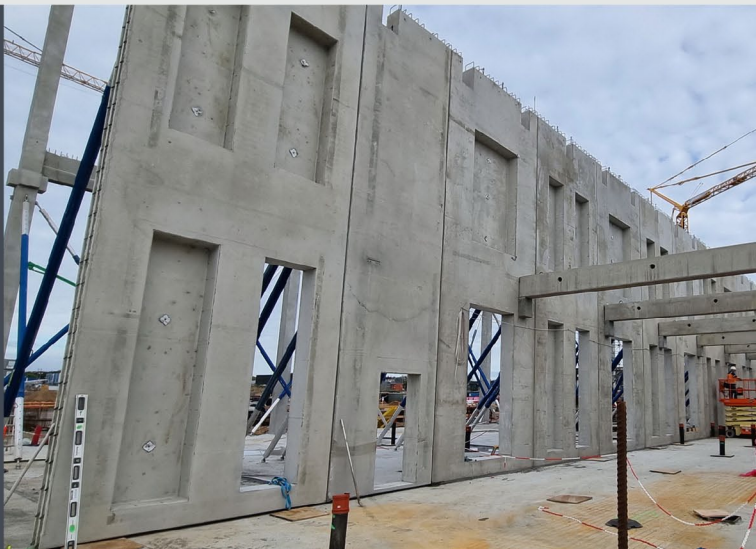
Slabs

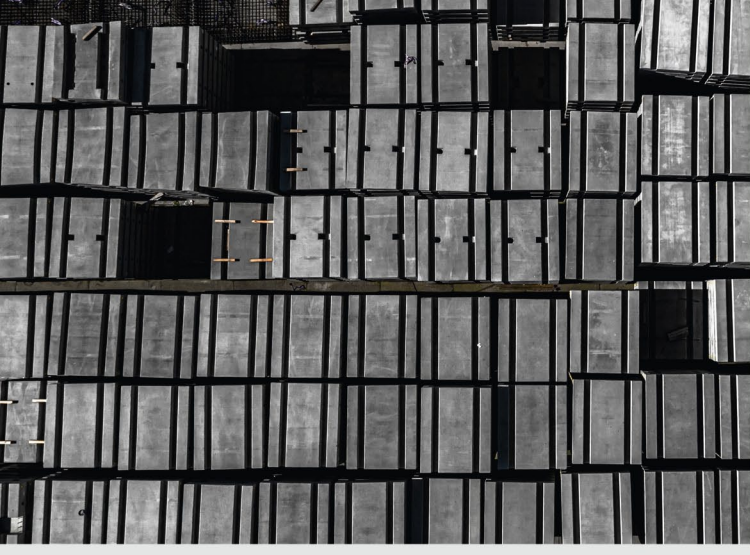


Columns



Walls





Slab tracks



Tunnel elements



Ballast blocks

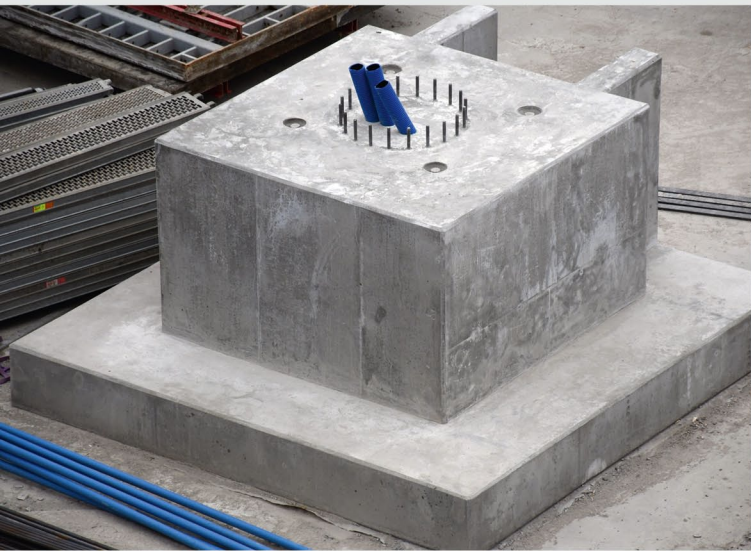


Sky lights





Chambers



Light mast



Storage blocs

GREENLAND



Jens Kristian Worm
Director
+45 20 26 33 62
jkw@arsleff.com

Jakub Krupka
Deputy Director
+48 785 860 901
jk@arsleff.biz

Aarsleff BIZ Sp. z o.o.
ul. Jana Soltana 1
72-602 Świnoujście, Poland
NIP / EU VAT No: PL 855 15 88 358
Tel: +48 91 3221 200
Mail: info@arsleff.biz

aarsleff.biz